

FLOORMONK[®]

PREMIUM SPC FLOORING

REMARKABLE ———
Completed **Projects**



EVERY SPACE IS A NEW
BEGINNING.

www.floormonk.com

Trusted by 145+ Global Brands



Our Testimonial

Let's check out what our beloved customers say



Mr. Chandra Shekharan Chennai

" Fantastic Flooring "

It's still in fantastic condition from when I purchased the 800 SQF of FLOORMONK SPC 8 months ago. It has a great feel and design. Installation across the entire house is simple. I'd without a doubt advice it!



Mr. Ahmed Kureshi Jammu Kashmir

" It's perfect Flooring product "

Has a Great feeling under foot and warm. A lot less noise than expected. Was easy for first time DIY'ers to install. Would recommend to others. FLOORMONK support team was great in helping us choose colours.



Mr. Kirit Parmar Rajkot, Gujarat

" The Perfect Choice for Pet Owners "

I recently had SPC flooring installed in my home. The team at the flooring company was professional, and friendly and made the process so easy. The flooring itself is not only stylish and modern, but also extremely durable and resistant to wear and tear. I have a puppy, and the floors have withstood his continual running, jumping, and playing perfectly. I highly recommend Floormonk SPC flooring to anyone looking for a beautiful, low-maintenance, and durable flooring option for their home.



Mr. Hiren Patel Himmatnagar, Gujarat

" A Restaurant Owner's Experience "

As a restaurant owner, I highly recommend FLOORMONK SPC flooring for any business looking for a stylish and durable flooring option. We recently had FLOORMONK SPC flooring installed in our restaurant and have been extremely impressed with the results. The flooring has held up well to heavy foot traffic, spills, and frequent cleaning, and still looks as good as new. We appreciated their attention to detail and commitment to ensuring that our project was completed to the highest standard. We would definitely recommend FLOORMONK SPC flooring to any business owner looking for a low-maintenance, stylish, and long-lasting flooring option.



Mr. Kishor Kumar Gir Resort, Gujarat

" Spot on product "

Our company has been using this product for all of our multi residential projects and have had unbelievable success with the quality and the durability. We are a dedicated floor company that use this product as a best luxurious option for our clients and have had great success. We have installed approximately 4000 m² without any complaint.



Mr. Jay Busa Simgola Gallery, Rajkot

" I examined several laminate samples, but I kept returning to FLOORMONK SPC Flooring. "

Recently installed It's Verona collection for my new show-room office I adore it! It has pleasant aesthetic look and feel, as stated by the FLOORMONK. And the greyish hue is stunning! Anyone wishing to enhance their flooring should consider doing this, in my opinion! This floor will be installed in our family room next. Big thank you to FLOORMONK team.





The Future
of Flooring

The Anatomy of SPC Flooring

Wear Layer

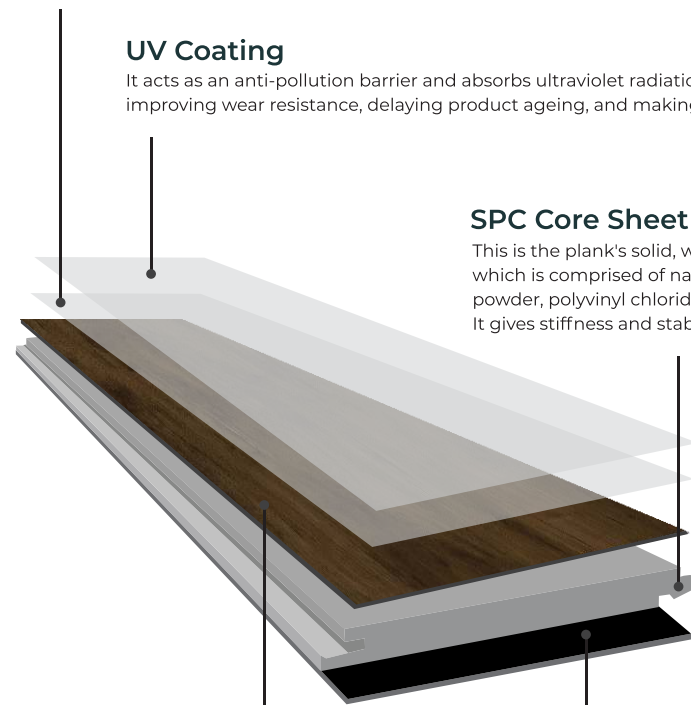
Wear layer serves as a shield for the plank. A wear layer, in essence, ensures that wear and tear do not have an impact on your floor.

UV Coating

It acts as an anti-pollution barrier and absorbs ultraviolet radiation effectively, improving wear resistance, delaying product ageing, and making cleaning easier.

SPC Core Sheet

This is the plank's solid, waterproof core, which is comprised of natural limestone powder, polyvinyl chloride, and stabilisers. It gives stiffness and stability to the plank.



Decor Film

This quality Vinyl Image layer provides a wooden-like appearance to your flooring, making it more opulent and authentic.

Underlayment

The underlayment absorbs sound, maintains warmth, and provides cushioning comfort. A denser layer provides better noise absorption and shock absorption.

SPC Flooring Technical Data

CHARACTERISTICS	STANDARDS			
	EN	Result	ASTM	Result
Size	EN 427	Pass	ASTM F536	Pass
Overall Thickness	EN 428	Pass	ASTM F36	Pass
Wear Layer Thickness	EN 429	Pass	ASTM F410	Pass
Dimension Squareness and Straightness	EN 427	Pass Squareness:0.18mm Straightness:0.07mm		
Chemical Resistance	EN 423	Pass	ASTM F925, ASTM F1344	Pass
Colour Fastness to Artificial Light	EN20105:B02 Method A	Pass, >Grade 6	ASTM F1515	Pass
Heat Stability by Color Change			ASTM F1514	Pass
Castor Chair Suitability	EN 425	Pass		
Residual Indentation	EN 433	Pass, 0.06mm	ASTM F1914, ASTM F970	Pass
Abrasion Group	EN 660-1/2	Group T	ASTM F510, ASTM D3384	Pass
Impact Resistance			ASTM F1265, ASTM D2632	Pass
Dimensional Stability	EN 434	Pass	ASTM F2199	Pass, 0.1%
Sound Resuction	ENISO717-2(ΔLw)	2 dB		
Flexibility	EN 435 Method A	Pass	ASTM F137	Pass
Slip Resistance	EN 13893	Class DS	ASTMD2047-93	Pass
Electrical Resistance	EN 1081 Method C	Pass	ASTM F150-06	Pass
Thermal Resistance	EN 12664	Pass		
Toxic Element Test	EN 71-3	Pass. Not toxic. Does not Contain heavy metal and formaldehyde		
Behaviour to Fire	ENISO11925-2 ENI3501-1 EN ISO 9239-1	Bf1-S1	ASTM E648-06	Pass/Class1
Smoke Density			ASTM E662	Pass, <450





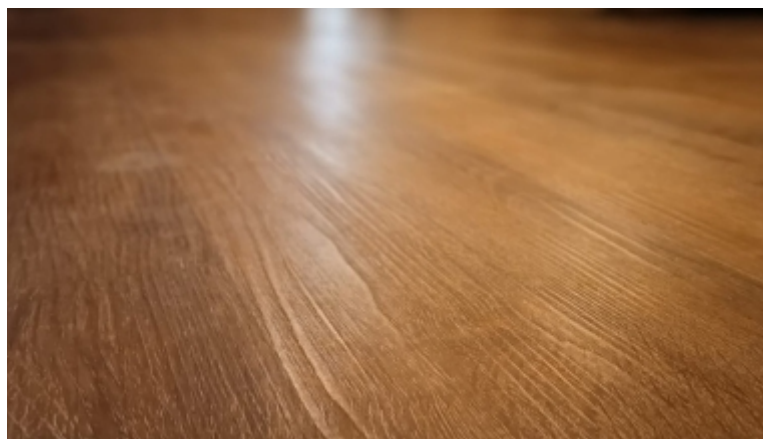
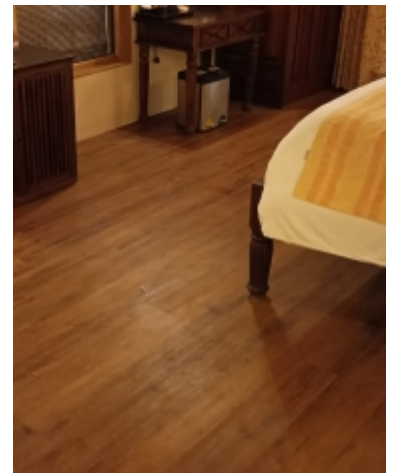
Bari

Feel the classic

Tap for **Virtual 360°**

SPC FLOORING TILE









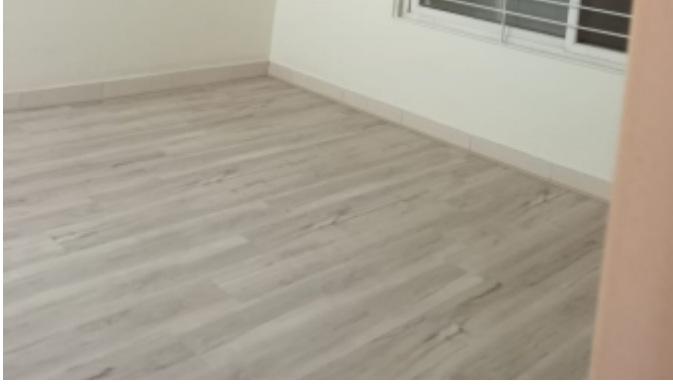
Fluid

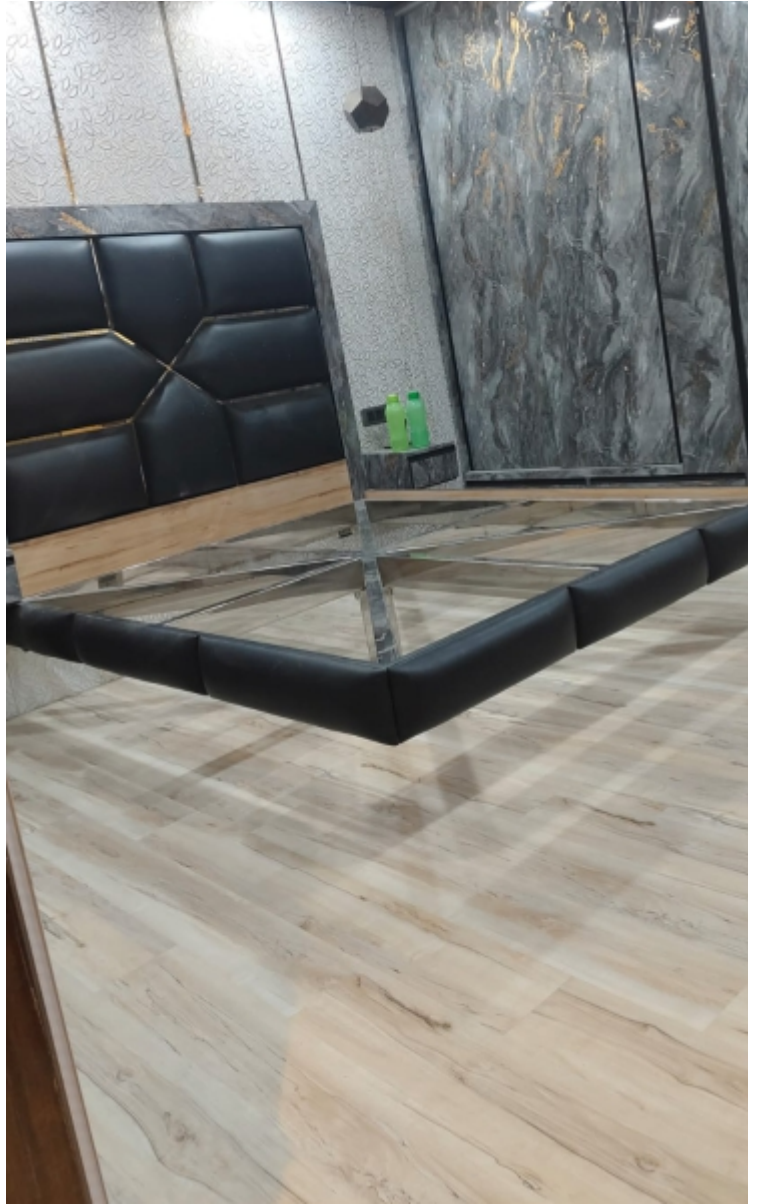
Perfect for every space

Tap for **Virtual** 360°

SPC FLOORING TILE











Luna

Design creates culture

Tap for **Virtual** 360°

SPC FLOORING TILE









Twilight

Explore simple yet significant

SPC FLOORING TILE

Tap for **Virtual** 360°









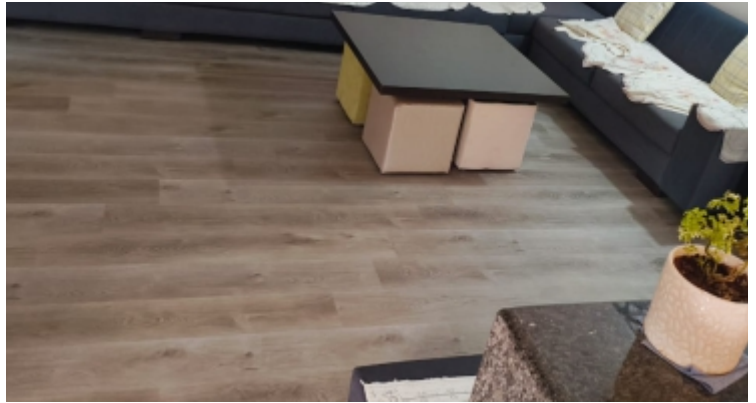
Verona

Shape of Imagination

Tap for **Virtual** 360°

SPC FLOORING TILE







Caldera

Taking your Surface to
the Next Level

SPC FLOORING TILE

Tap for **Virtual** 360°







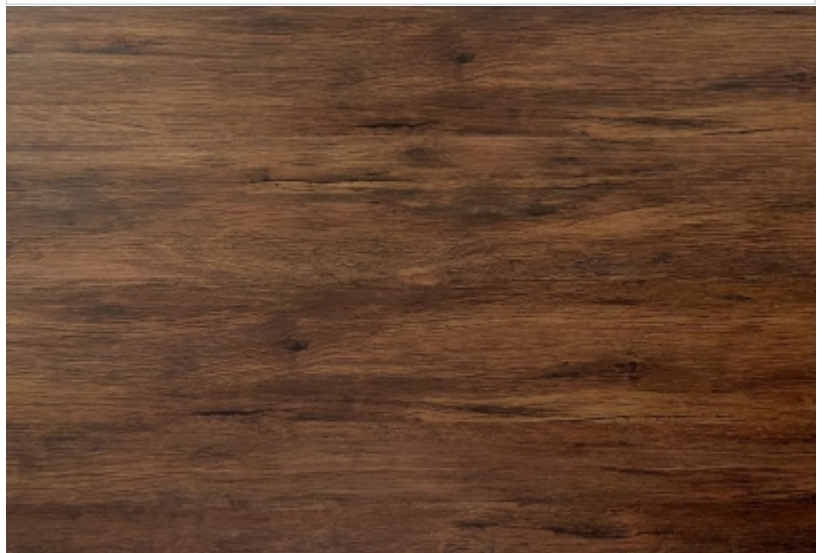


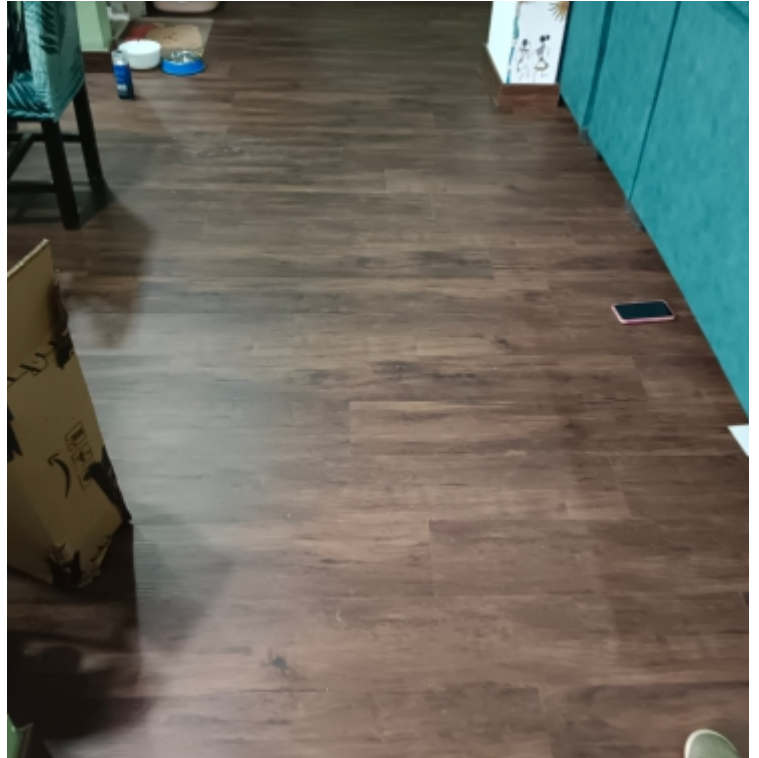
Sedona

Bringing great design home

Tap for **Virtual** 360°

SPC FLOORING TILE







Milano

Look deep into natural excellence

SPC FLOORING TILE

Tap for **Virtual 360°**







Sofia

Simple but insightful

Tap for **Virtual 360°**

SPC FLOORING TILE







Zion

Apprecious thingt come out from real beauty

Tap for **Virtual** 360°

SPC FLOORING TILE





Trenz

A new flooring, A new life

Tap for **Virtual** 360°

SPC FLOORING TILE









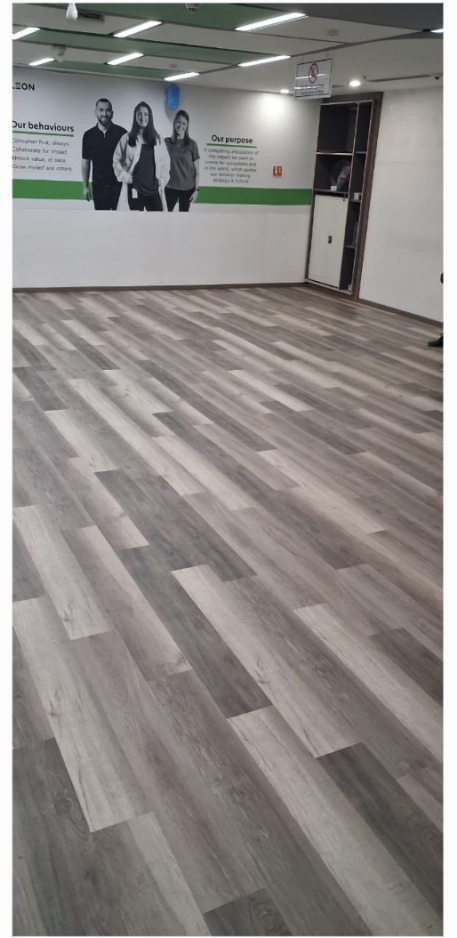
Alamo

Give your space a
luxurious feel

Tap for **Virtual** 360°

SPC FLOORING TILE







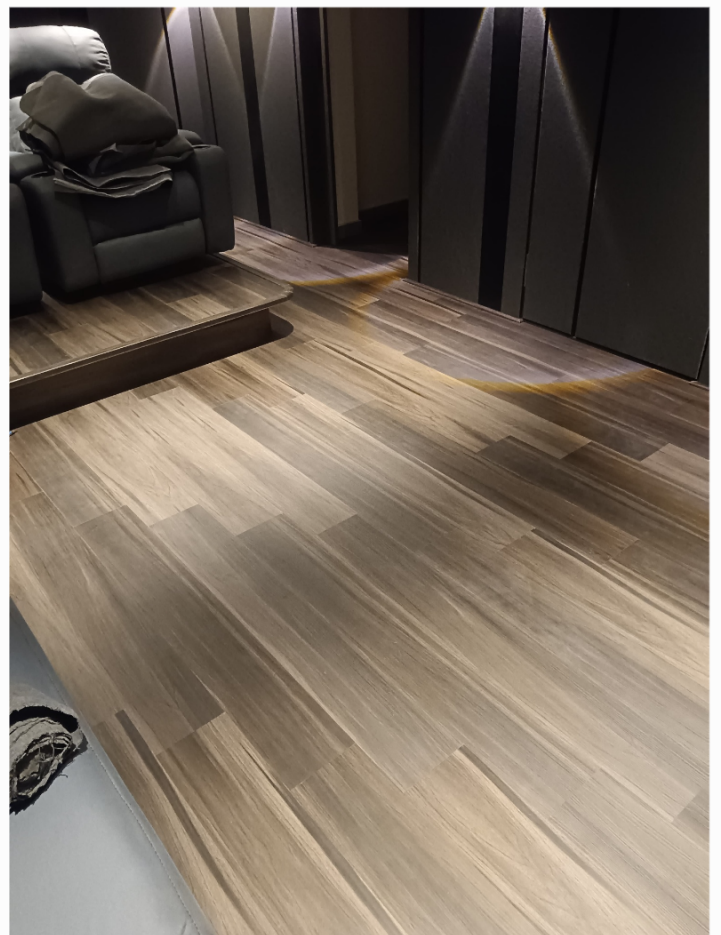
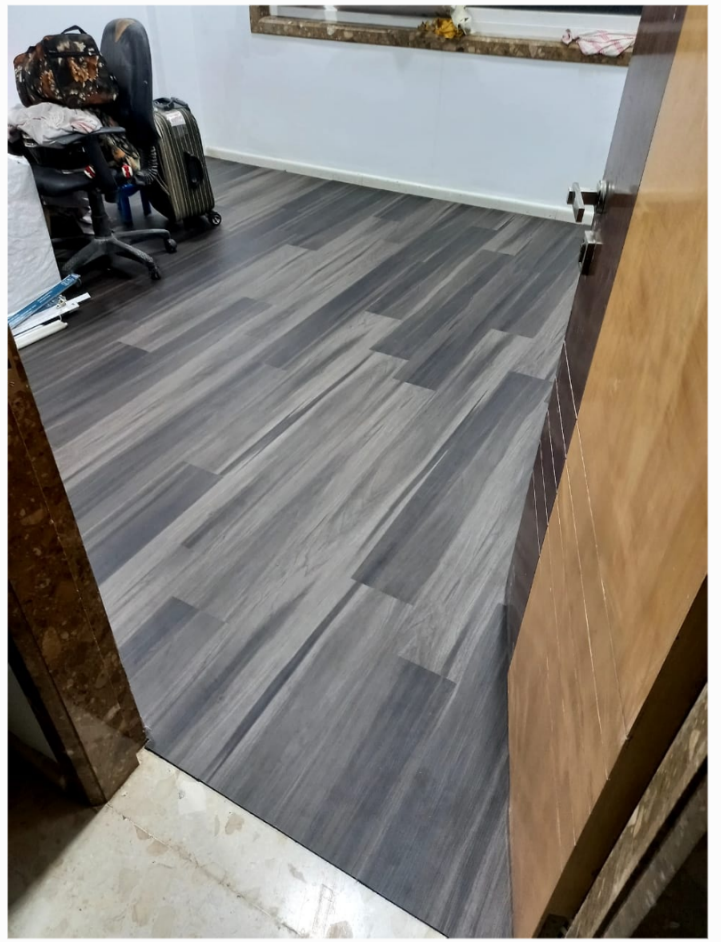
Espresso

Class of Exclusivity

Tap for **Virtual** 360°

SPC FLOORING TILE







Kavaro

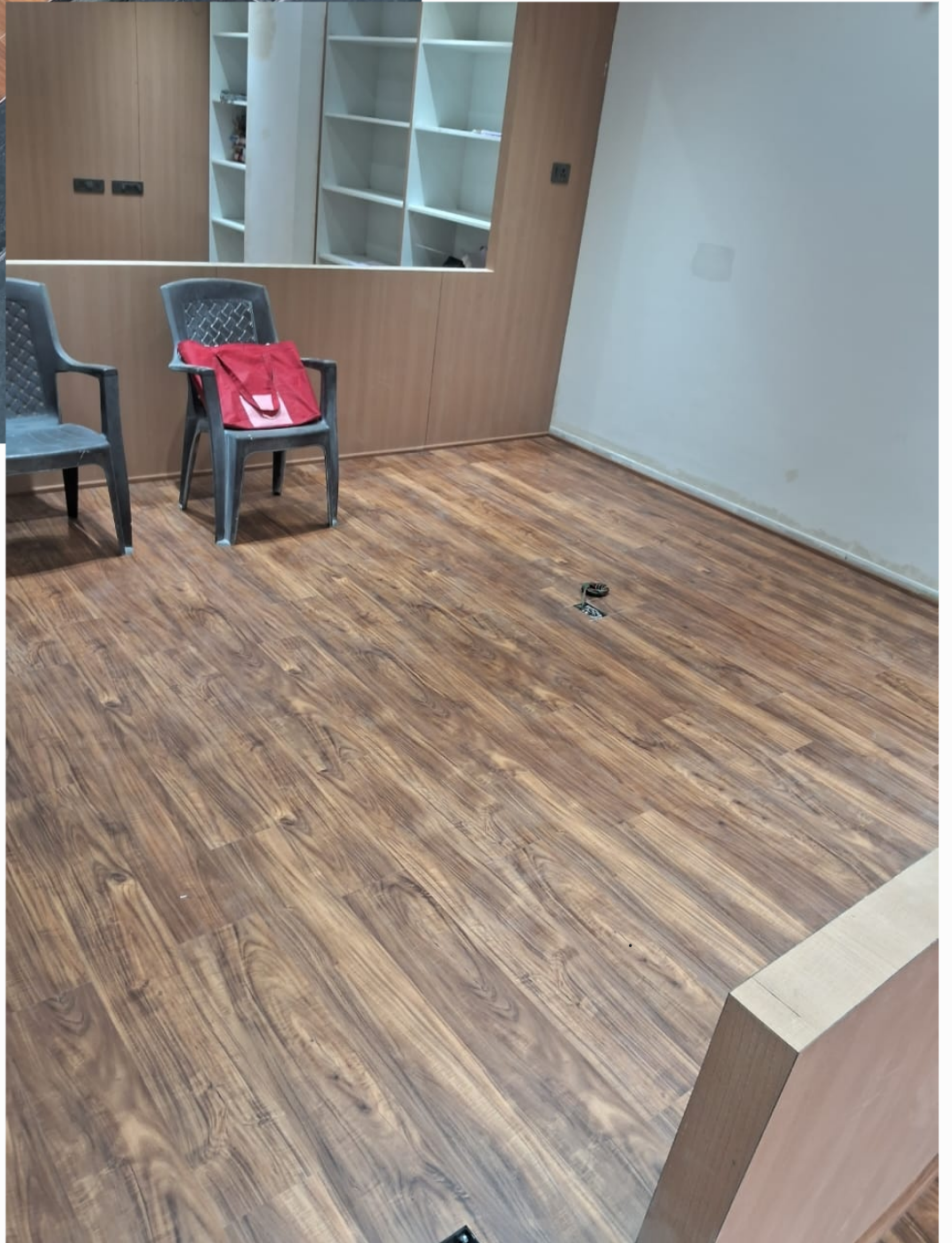
Reliable Floors.
Remarkable Living



Design
Kavaro

Tap for **Virtual 360°**

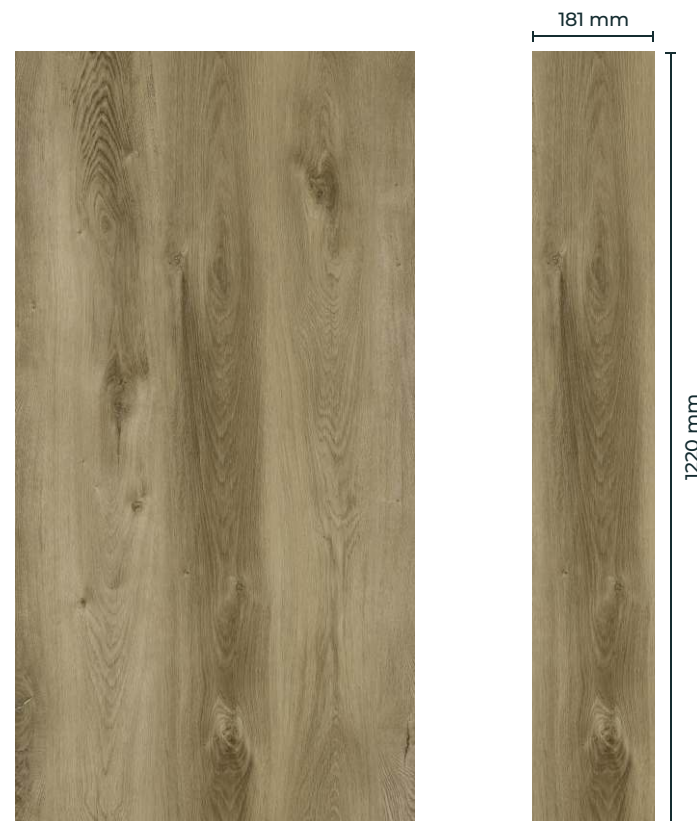






Mesa

Timeless Floors for
Modern Living



Design
Mesa

Tap for **Virtual 360°**



